



SYDNEY COLLEGE  
OF ENGLISH

# ENGLISH FOR HEALTH (EHP) 1+2 PROFESSIONALS

General English (Morning) + EHP (Afternoon)

EHP is not only for doctors and nurses. Many students would benefit from studying EHP including:

- Health professionals who want to communicate well with English speaking patients and colleagues
- Students going into a career in interpreting and translating
- Students who plan to have a career in social work
- People who want to improve their medical vocabulary and be able to talk about their own or their family's health issues fluently



College House Group

Sydney College of English (EST 1987)  
ACCESS Language Centre, Sydney (EST 1997)  
Dominion English School, New Zealand (EST 1969)



Sydney College of English  
Level 3, 579 Harris Street, Ultimo, NSW 2007, Australia  
CRICOS Provider No. 00050A  
marketing@sce.edu.au  www.sce.edu.au   
<https://www.facebook.com/SydneyCollegeOfEnglish>   
Fax: (61 2) 9281 5208  Tel: (61 2) 9281 5211 





SYDNEY COLLEGE  
OF ENGLISH

## COURSE DESCRIPTION //

The EHP course at SCE consists of two levels, EHP 1 and EHP 2.

• If a student is Upper Intermediate to Advanced English level, they could join OET

• For those working towards proficiency in English, further study in CAE or CPE is a great option. It helps students gain confidence too!

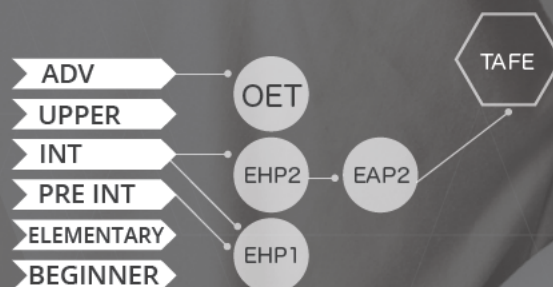
**Starting date//** Every Monday  
**Duration//** From one week, each level is 12 weeks.

**Lessons//** 15 hours per week GE + 8 hours per week EHP  
Hospital inspection in March & September.

**EHP 1+2** are each taught in 12 week blocks. Students can start any Monday and do as much or as little as they like but it's best to do 4-12 weeks.



	EHP1	EHP2
Level Requirement	Pre Intermediate/ Intermediate	Intermediate/ Upper INT
Duration	12 weeks (※)	12 weeks (※)
Contents	<ul style="list-style-type: none"> <li>• Hospital admissions</li> <li>• Pain</li> <li>• Accidents and emergencies</li> <li>• Caring for the elderly</li> <li>• Nutrition and obesity</li> <li>• Symptoms etc</li> </ul>	<ul style="list-style-type: none"> <li>• Renal</li> <li>• Pharmacy</li> <li>• Dermatology</li> <li>• Oncology</li> <li>• Obstetrics</li> <li>• Neurology</li> <li>• Coronary</li> <li>• Surgery etc</li> </ul>



**chg://**  
college  
house  
group

College House Group

Sydney College of English (EST 1987)  
ACCESS Language Centre, Sydney (EST 1997)  
Dominion English School, New Zealand (EST 1969)



Sydney College of English  
Level 3, 579 Harris Street, Ultimo, NSW 2007, Australia  
CRICOS Provider No. 00050A

marketing@sce.edu.au    www.sce.edu.au  
<https://www.facebook.com/SydneyCollegeOfEnglish>  
Fax: (61 2) 9281 5208    Tel: (61 2) 9281 5211







SYDNEY COLLEGE  
OF ENGLISH

## TESTIMONIALS //

I really enjoyed the EHP course from the beginning till the very end. Since the lessons are related to my professional field, and my classmates also work in the same environment, you find many interesting things to learn everyday. If I could, I would have stayed longer to further my studies.

The OET course is really tough because the test is for checking if your English level can be used in the medical field in Australia. However what I studied in EHP classes and OET classes has really helped me today. Really miss my teachers! Hope to see you soon!



**Anna**

(GE, EHP & OET - 42weeks)



I remember my classes at SCE were pretty enjoyable from the beginning. The teachers are friendly and they always kindly explained me something I didn't understand. Classmates were from different countries so that not only did you study English but also you could learn about various cultures from around the world.

Also, we were encouraged, with other students, to expand our vocabulary together and give each other advice about pronunciation. A mock exam, held once a month, gave us motivation to study.

In EHP, I studied basic medical English. In the beginning I imagined it would be quite difficult but my previous experience as a nurse back home helped me and time just flew. I learnt not only the medical words but also how to communicate more effectively with patients or other medical staff. Also, I learnt about health and nursing system differences between Japan and Australia.

**Sayaka**

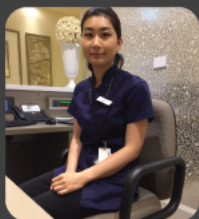
(GE, EHP, IELTS, EAP & OET-44weeks)



I planned on studying nursing at TAFE after studying at SCE. So the EHP course was the perfect preparation for me.

Thanks to the learning experiences at SCE, I am able to work as an assistant nurse in Sydney.

Currently, I'm achieving to pass the OET and become a certified nurse.



**Nozomi**

(GE, EHP & EAP -17 weeks)

